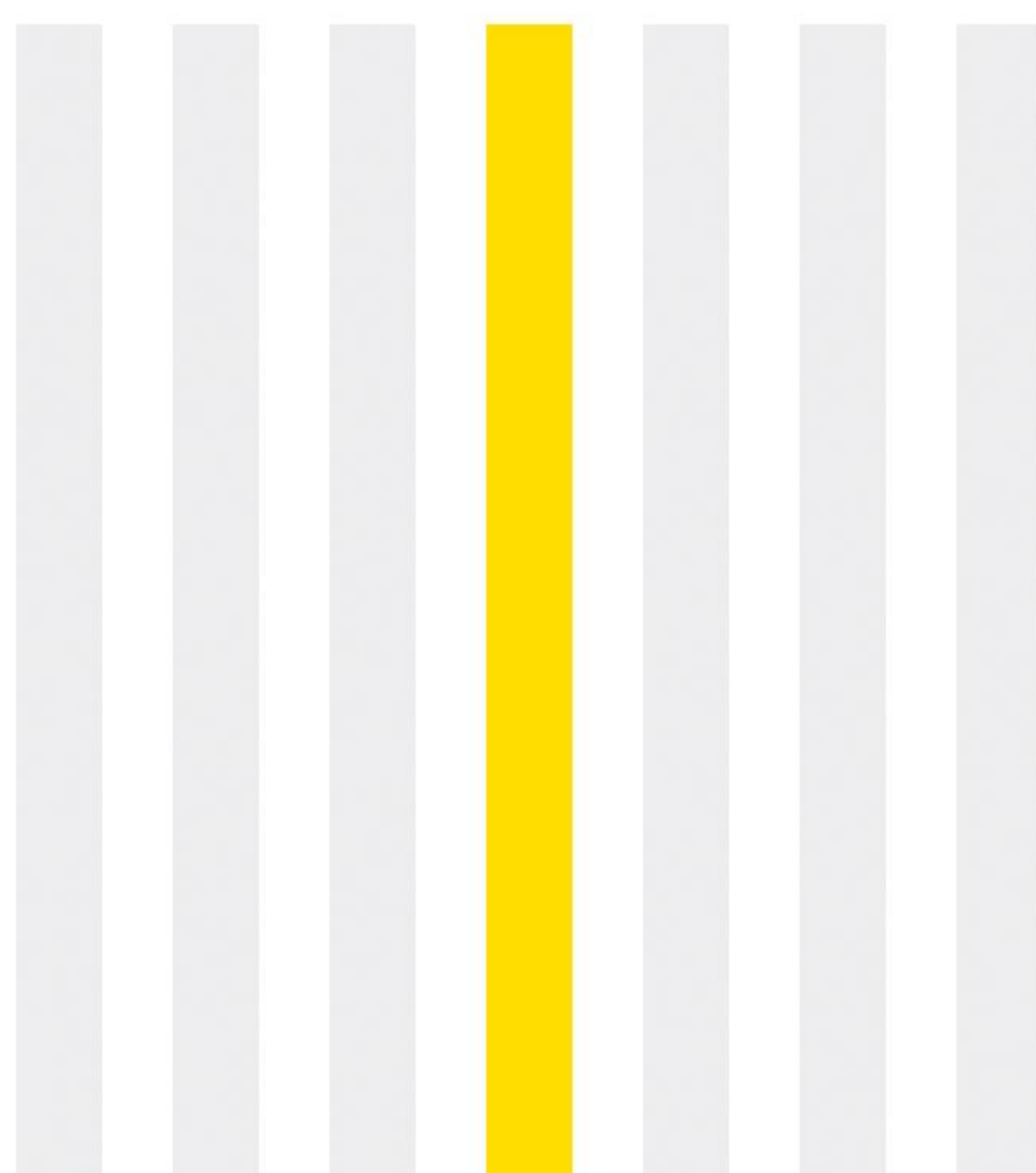


رعد البحر لخدمات الصيانة السفن و القوارب

 RASHBM.com



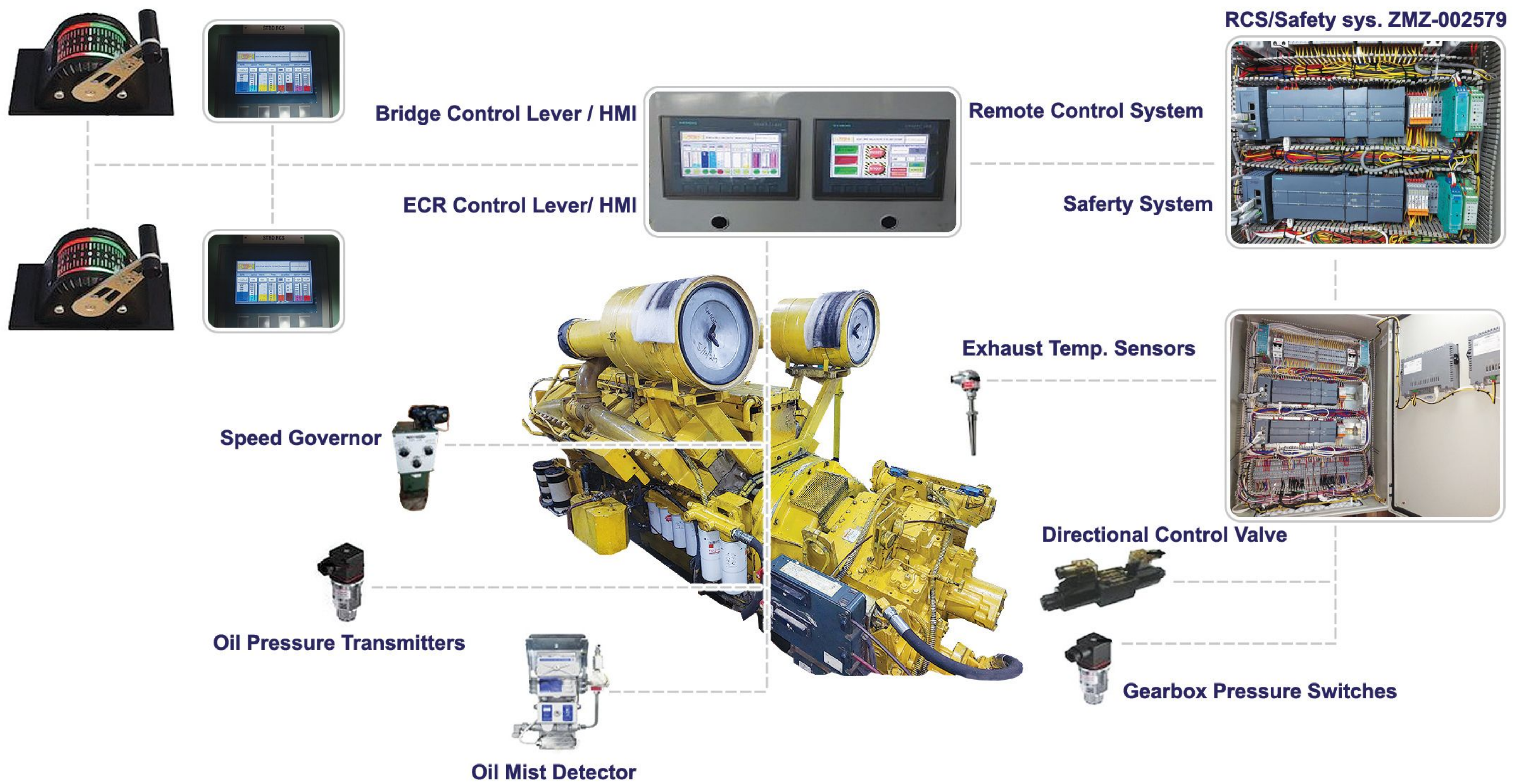


Who we are:

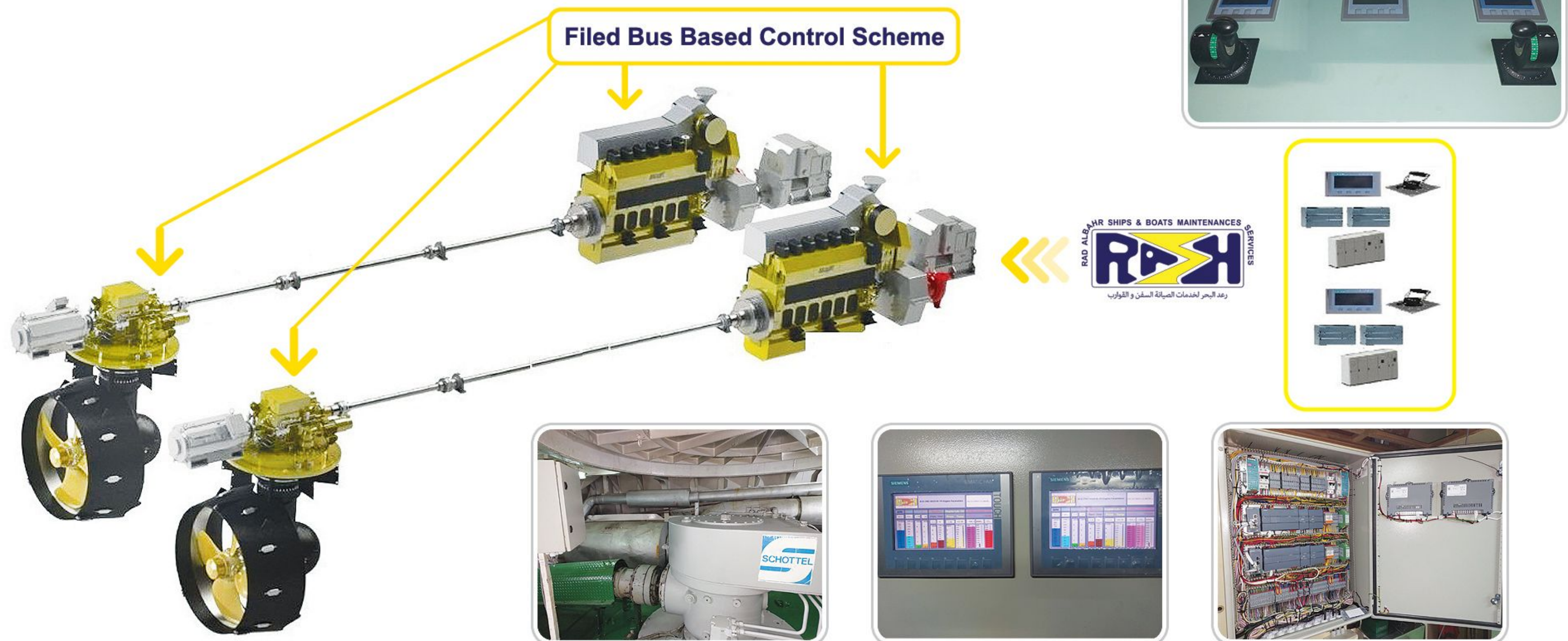
We are product owner of the four major and vital marine control and monitoring systems and providing expertise engineering design & implementation to our clients who wants to upgrade their maritime vessels, by renovating & retrofitting vital control/safety systems under SIEMENS platform.

Our products in brief are:

- 1 Marine Remote Control & Safety System (for Azimuth Thrusters, Engines & CPP).
- 2 Marine Alarm Monitoring System (UMS) & Level Gauging system.
- 3 Marine Power Management System for the Switch Board & Generators.
- 4 Versatile Control & Safety system (for Electro-Hydraulic & Electro Pneumatic cranes, winches & boilers).



Remote Engine & Thruster Safety/Control System (ZMZ-002577/79)

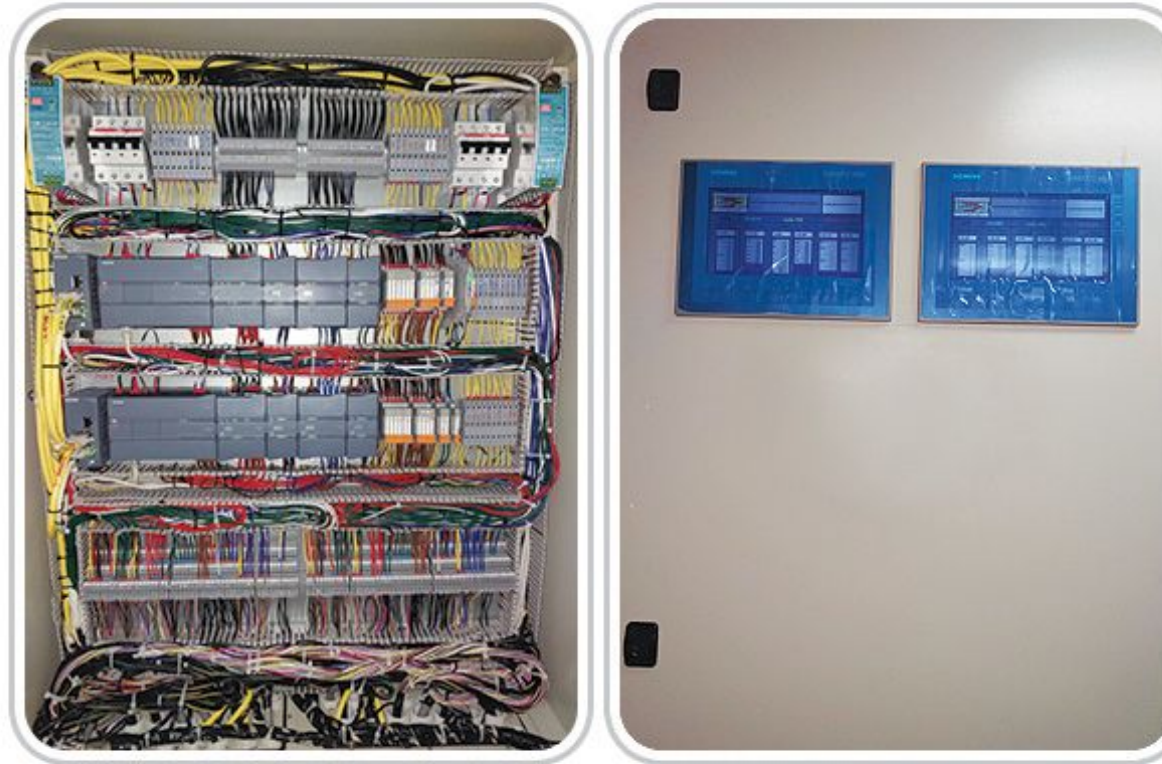


Full automatic Remote Control over the Main Engine (s) and the Azimuth Thrusters through the marine used startegies and under SIEMENS licensed program included. Full automatic Safety system unit and remote engine(s) and thrusters parameters management program included. Remote Alarm Monitoring for the main engines and the thrusters are included. Full marine strategies for the Clutch engagement process and safeties included. Full access to the main engines and thrusters data monitoring and control through the user-frendly HMI applicable. Main engines Idling and cooling down programs selectable. Incoming,Outgoing thrusters monitoring and crash prevention safety strategies included. SingleTouch Clutch engagement Disengagement process through a user firendly HMI applicable. Main engines fully automatic start/stop procedures are included, including Auto-start/stop safeties related to the thrusters. Slow/Down and Shut/Down management and crash preventive trip management and additional safeties are included. Extra options in the future can be included as perclient's demands to the original package



**Bridge Master & Co-Pilot
Controllers / HMI (s)**

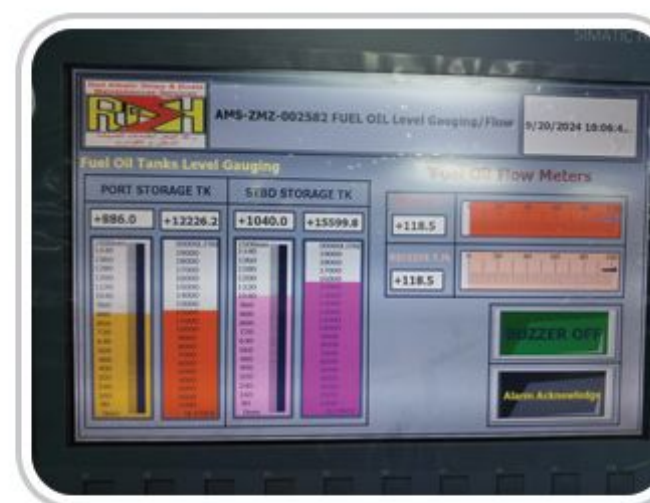
- Under SIEMENS cutting-edge PLC, Marine approved type control & Safety systems for the Azimuth Thrusters (SCHOTTEL brand).
- Extra Ordinary & innovative marine Strategies, all embedded, together With intelligent RASHBM-ZMZ Series softwares.
- Master-Pilot & Co-Pilot dual Control strategies over the Azimuth Thrusters.
- User-ftrendly control pages Applicable through the SIEMENS Software.



SIEMENS
Ingenuity for life



Mess Room WCMU



CHENG WCMU



BRIDGE WCMU



Fire Alarm

ECR Central Panel



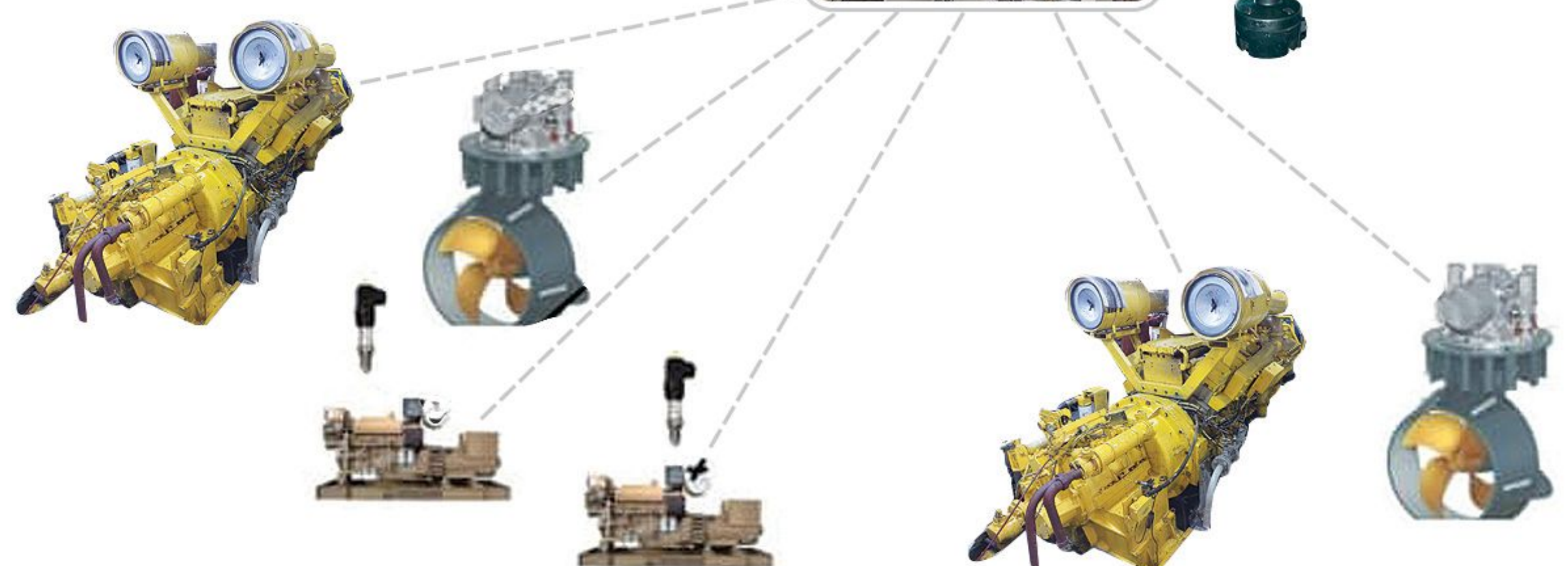
Signal Aquisition Units



RCS-ZMZ-002576-79



PMS-ZMZ-002581



Alarm Monitoring System (Un-Manned Ship Version) AMS-UMS-ZMZ-002582

The "ZMZ-002577" is a FBB (Field-Bus-Based) based Alarm Monitoring system (Un-Manned Ship Version), consisting of a vast range of wise and intelligent flowcharts and strategies, which are being gathered thru more than 25 years' experience at marine fields of activities and several types of systems design and configuration by our company's technical team



PMS ZMZ-002581 Features:

- 1 Full automatic active load sharing program included.
- 2 Full automatic synchronization and ACB(s) management program included.
- 3 Bus bars automatic control and selectable management available.
- 4 Full marine switchboards safeties included.
- 5 Full access to the generators data monitoring and control through the user-friendly HMI applicable.
- 6 Generators Idling and cooling down programs selectable.
- 7 Incoming, Outgoing generators monitoring and blackout prevention strategies included.
- 8 Single-Touch synchronization, generators fully automatic start, stop procedures are included.
- 9 Preferential trip management and additional power source management program included.
- 10 Extra options can be included as per client's demands.

LGC ZMZ-002586 Features:

- 1 All Engine safeties applicable.
- 2 Remote Monitoring over the engine available
- 3 Data and Parameters remote monitoring applicable.
- 4 Remote Start, Stop and engine cool down applicable.

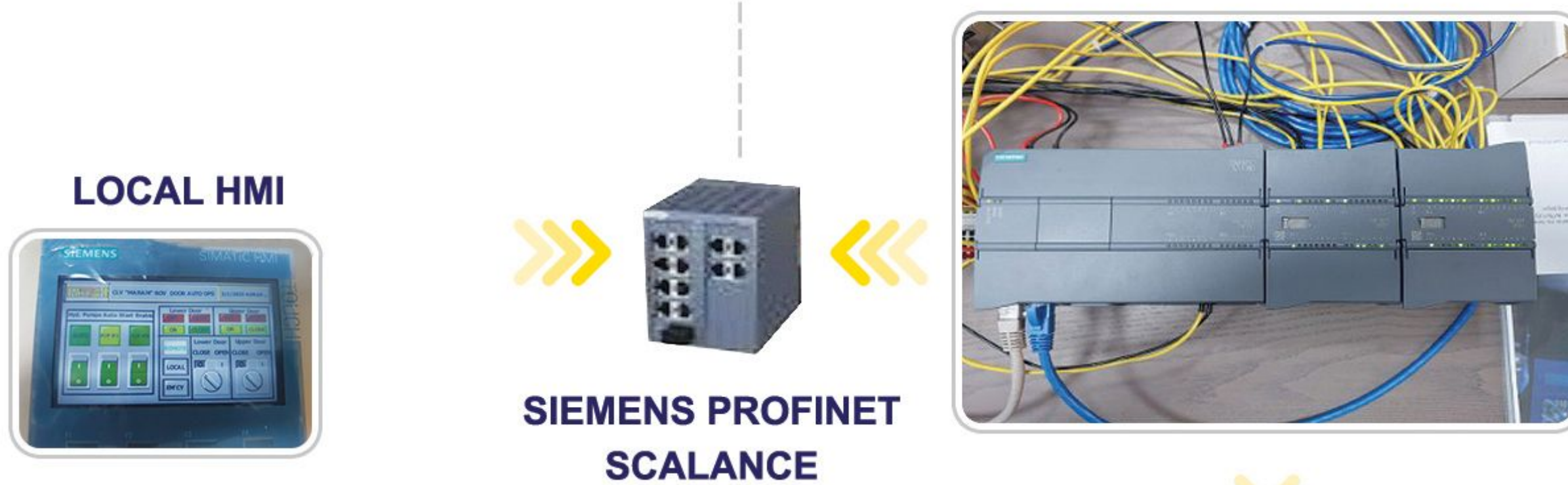
LGC ZMZ-002586

A/E #3 Local Control Panel

Marine Compact Hydraulic Controller
CHC-ZMZ-002586
 Specifically has been released for the Hydraulic systems, including the cranes, Towing Wiches and AHT systems



Electronic Joystick Controller



An intelligent and compact SIEMENS marine approved PLC based system, comprising the marine strategies for the electro-hydraulic systems safety and control means. Containing cutting-edge technologically improved softwares to bring about innovation over the obsolete systems to establish a qualified renovation and/or retrofit. Basis on an extra-ordinary and innovative softwares from "RASHBM" company and technologically-enhanced marine approved hardware PLC from the SIEMENS.

ZMZ-002586 Series Compact Controller/Monitoring

Feedback System

Control Commands

Process Control



CONTACT INFORMATION

UAE

Managing Director +971 52 308 1659
Technical Support +971 52 388 4008



www.RASHBM.ae
info@rashbm.ae
tech@rashbm.ae

[rashbm.ae](https://www.instagram.com/rashbm.ae) [Shahrooz Zarouri](https://www.linkedin.com/company/shahrooz-zarouri) [Kamran Kazemi](https://www.linkedin.com/company/kamran-kazemi)